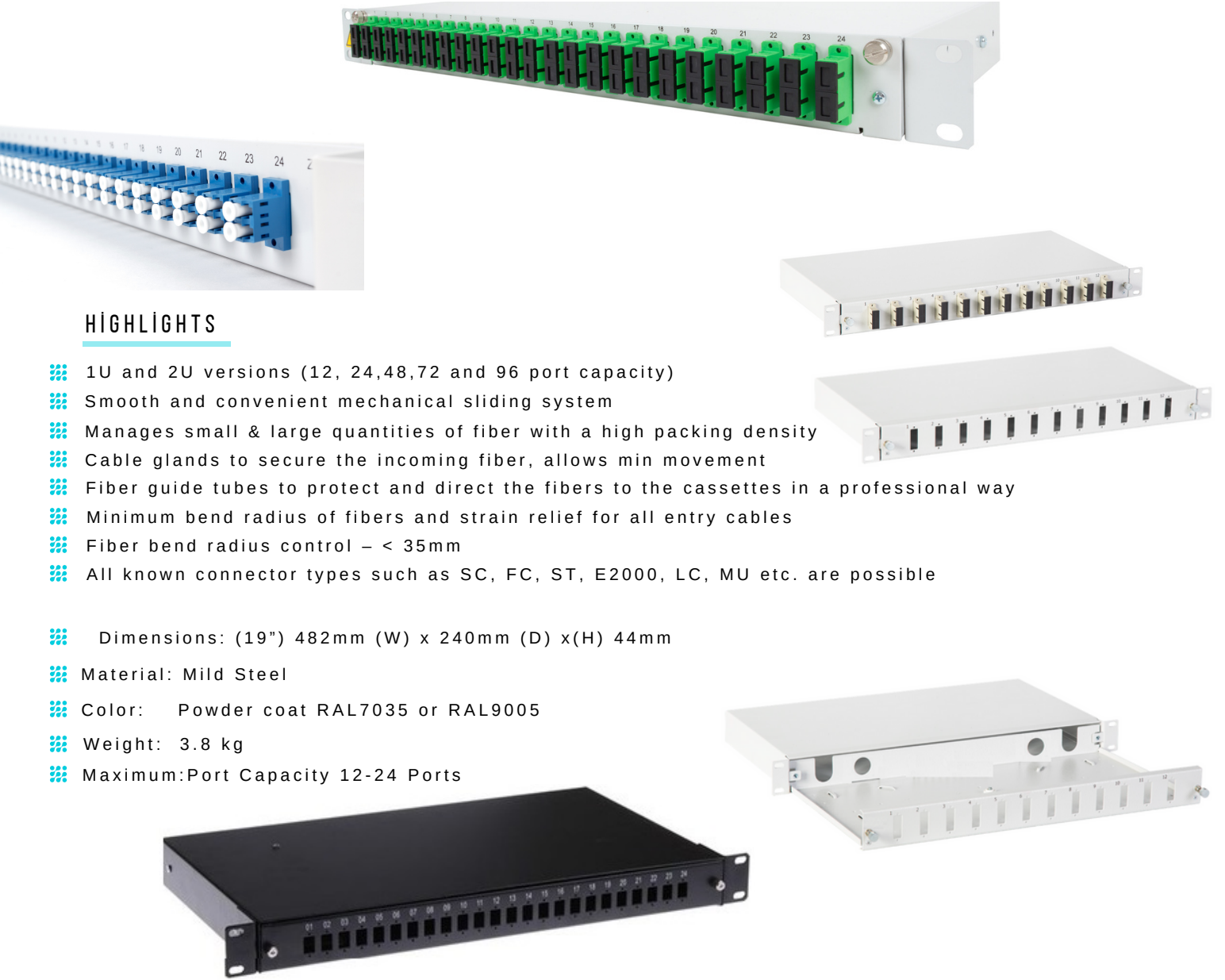


A close-up photograph of several blue and yellow fiber optic cables plugged into a blue patch panel. The cables are arranged in a neat, parallel fashion. The background is a blurred server room with more cables and equipment. The overall color palette is dominated by blues and yellows, with some red accents from the server racks in the background. Several white starburst graphics are scattered across the image, adding a sense of technology and connectivity.

FIBER OPTIC SOLUTIONS

1U-FP TYPE FIBER OPTICAL PANELS MECHANICAL



HIGHLIGHTS

- 1U and 2U versions (12, 24,48,72 and 96 port capacity)
- Smooth and convenient mechanical sliding system
- Manages small & large quantities of fiber with a high packing density
- Cable glands to secure the incoming fiber, allows min movement
- Fiber guide tubes to protect and direct the fibers to the cassettes in a professional way
- Minimum bend radius of fibers and strain relief for all entry cables
- Fiber bend radius control – < 35mm
- All known connector types such as SC, FC, ST, E2000, LC, MU etc. are possible

- Dimensions: (19") 482mm (W) x 240mm (D) x(H) 44mm
- Material: Mild Steel
- Color: Powder coat RAL7035 or RAL9005
- Weight: 3.8 kg
- Maximum:Port Capacity 12-24 Ports

1U 19" Fiber Optic Patch Panel with Mechanical Sliding Mechanism

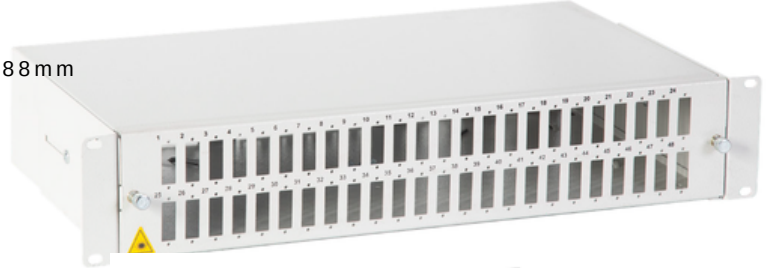
Product code	Product description	Dimensions (W*D*H)
MT.FP1U12SCD.C0	1U 19" FP TYPE 12 Port SC Duplex Fiber Optic	482x240x44 mm
MT.FP1U24SCD.C0	1U 19" FP TYPE 24 Port SC Duplex Fiber Optic	482x240x44 mm
MT.FP1U12SCS.C0	1U 19" FP TYPE 12 Port SC Simplex Fiber Optic	482x240x44 mm
MT.FP1U24SCS.C0	1U 19" FP TYPE 24 Port SC Simplex Fiber Optic	482x240x44 mm
MT.FP1U12ST.C0	1U 19" FP TYPE 12 Port ST Fiber Optic	482x240x44 mm
MT.FP1U24ST.C0	1U 19" FP TYPE 24 Port ST Fiber Optik	482x240x88 mm

2U-FP TYPE FIBER OPTICAL PANELS MECHANICAL



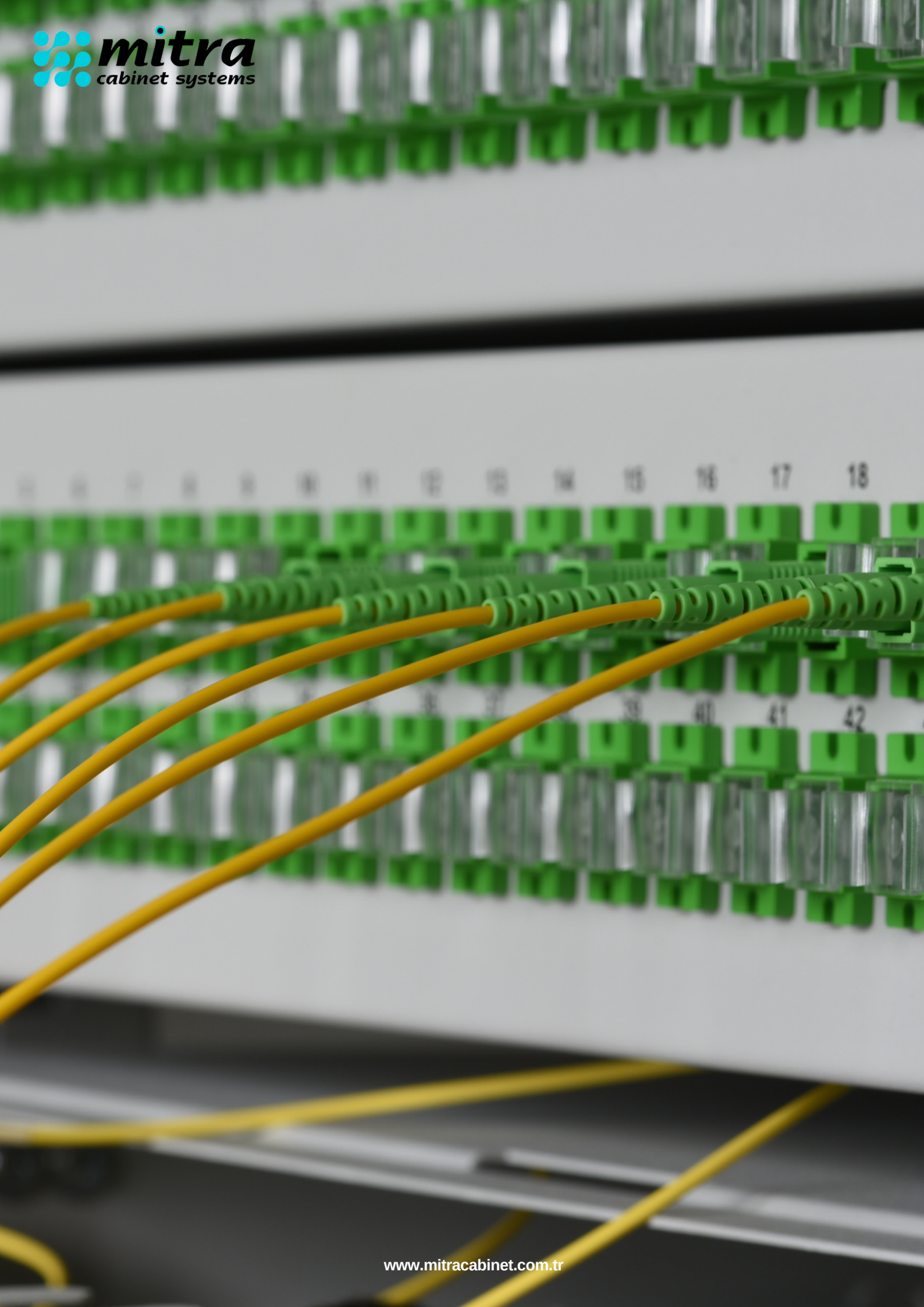
Technical Details

- Dimensions: (19") 482mm (W) x 240mm (D) x(H) 88mm
- Material: Mild Steel
- Color: Powder coat RAL7035 or RAL9005
- Weight: 3.8 kg
- Maximum:Port Capacity 24-48 Ports



2U 19" Fiber Optic Patch Panel with Mechanical Sliding Mechanism

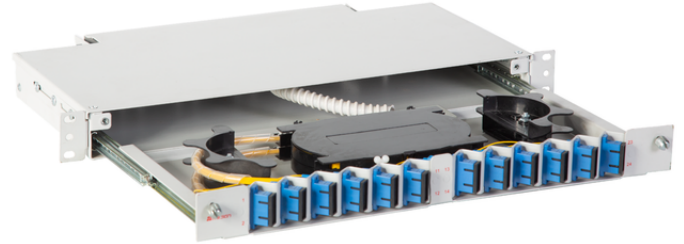
Product code	Product description	Dimensions (W*D*H)
MT.FP2U48SCD.C0	2U 19" FP TYPE 48 Port SC Duplex Fiber Optic	482x240x88 mm
MT.FP2U48SCS.C0	2U 19" FP TYPE 48 Port SC Simplex Fiber Optic	482x240x88 mm
MT.FP2U48ST.C0	2U 19" FP TYPE 48 Port ST Fiber Optic	482x240x88 mm



1U-FM TYPE FIBER OPTIC PANELS ANGLED WITH TELESCOPIC RAILS



- Our 1U/2U/3U/4U 19" Angled Patch Panels with Telescopic Rails ensures professional cable management and, using a side-facing fiber position for high laser safety, limits the risk of health problems due to laser contact to eyes.



Technical Details

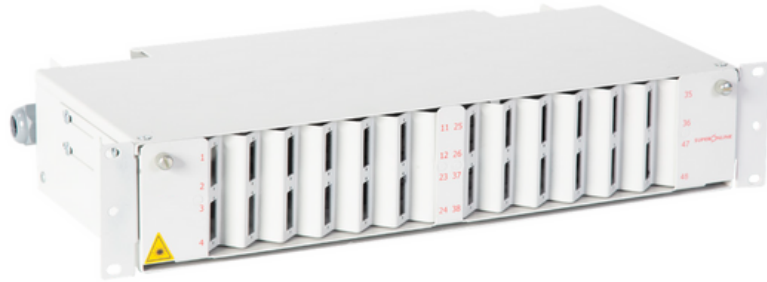
- Dimensions: (19") 482mm (W) x 240mm (D) x(H) 44mm
- Material: Mild Steel
- Color: Powder coat RAL7035 or RAL9005
- Maximum:Port Capacity 12-24 Ports
- Weight:4kg



1U 19" Angled Patch Panels with Telescopic Rails

Product code	Product description	Dimensions (W*D*H)
MT.FM1U12SCD.C0	1U 19" FM TYPE 12 Port SCD Angled Patch Panels with Telescopic Rails Fiber Optic	482x240x44mm
MT.FM1U12SCS.C0	1U 19" FM TYPE 12 Port SCS Angled Patch Panels with Telescopic Rails Fiber Optic	482x240x44mm

2U-FM TYPE FIBER OPTIC PANELS ANGLED WITH TELESCOPIC RAILS



Technical Details

- Dimensions: (19") 482mm (W) x 240mm (D) x(H) 88 mm
- Material: Mild Steel
- Color: Powder coat RAL7035 or RAL9005
- Maximum:Port Capacity 12-24-48 Ports
- Weight: 6kg

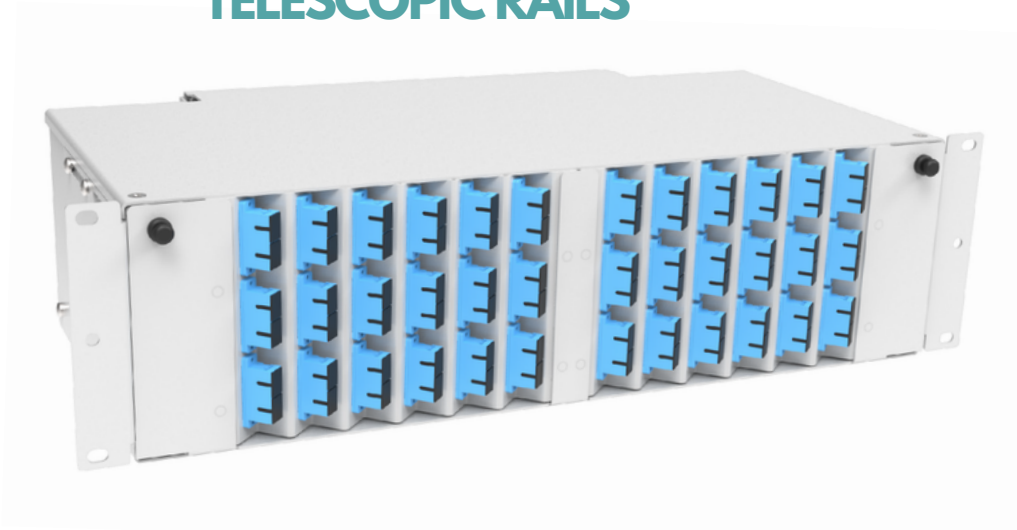


2U 19" Angled Patch Panels with Telescopic Rails

Product code	Product description	Dimensions (W*D*H)
MT.FM2U24SCD.C0	2U 19" FM TYPE 24 Port SCD Angled Patch Panels with Telescopic Rails Fiber Optic	482x240x88 mm
MT.FM2U24SCS.C0	2U 19" FM TYPE 24 Port SCS Angled Patch Panels with Telescopic Rails Fiber Optic	482x240x88 mm



3U-FM TYPE FIBER OPTIC PANELS ANGLED WITH TELESCOPIC RAILS



Technical Details

- ▣ Dimensions: (19") 482mm (W) x240mm (D) x(H) 132mm
- ▣ Material: Mild Steel
- ▣ Color: Powder coat RAL7035 or RAL9005
- ▣ Maximum:Port Capacity 12-24-36-48 Ports
- ▣ Weight:10kg

3U 19" Angled Patch Panels with Telescopic Rails

Product code	Product description	Dimensions (W*D*H)
MT.FM3U36SCD.C0	3U 19" FM TYPE 36 Port SCD Angled Patch Panels with Telescopic Rails Fiber Optic	482x240x132 mm
MT.FM3U36SCS.C0	3U 19" FM TYPE 36 Port SCS Angled Patch Panels with Telescopic Rails Fiber Optic	482x240x132 mm



4U-FM TYPE FIBER OPTIC PANELS ANGLED WITH TELESCOPIC RAILS



Technical Details

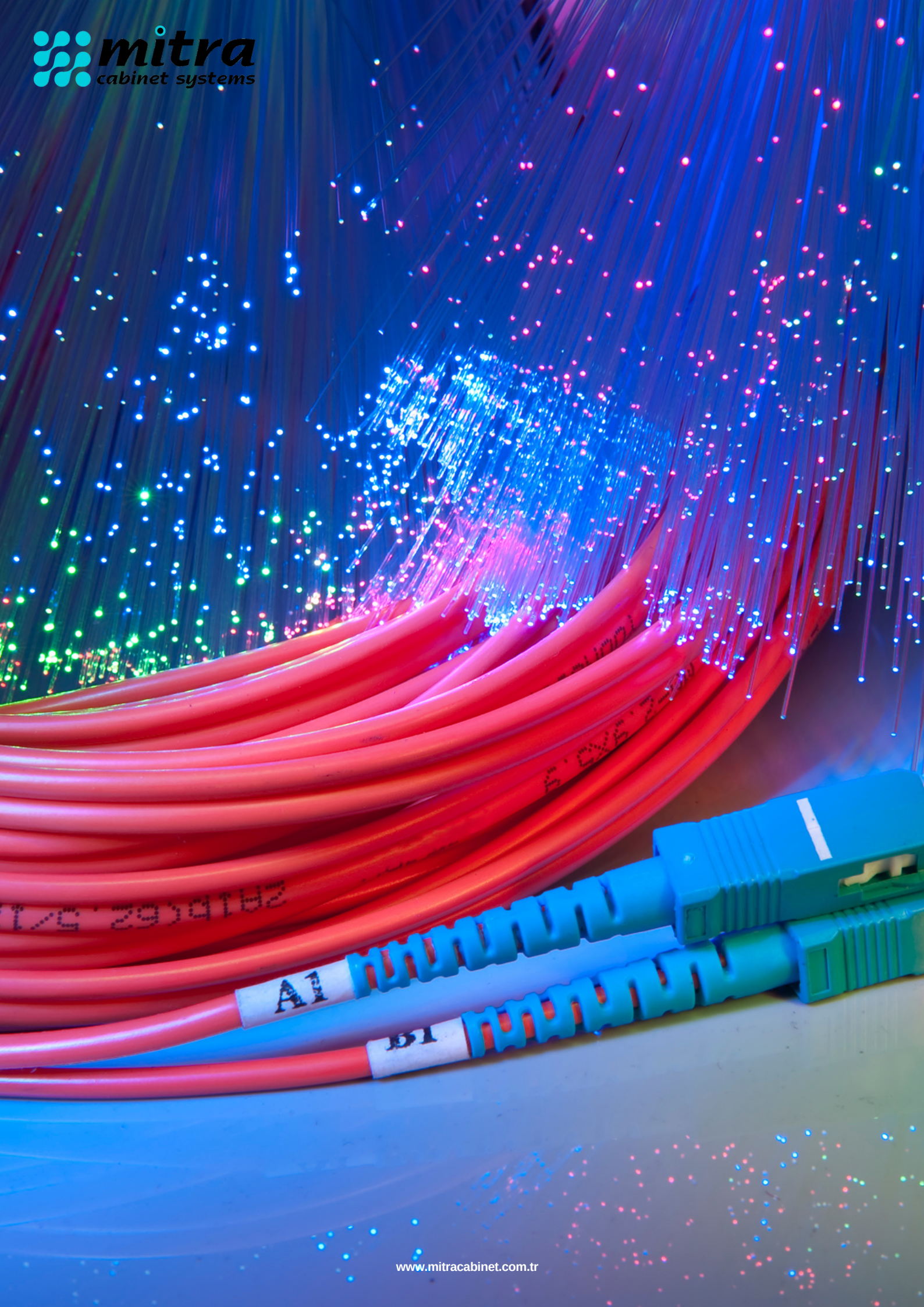
- Dimensions: (19") 482mm (W) x 240mm (D) x(H) 176mm
- Material: Mild Steel
- Color: Powder coat RAL7035 or RAL9005
- Maximum:Port Capacity 12-24-36-48 Ports
- Weight:15kg



4U 19" Angled Patch Panels with Telescopic Rails

Product code	Product description	Dimensions (W*D*H)
MT.FM4U48SCD.C0	4U 19" FM TYPE 48 Port SCD Angled Patch Panels with Telescopic Rails Fiber Optic	482x240x132 mm
MT.FM4U48SCS.C0	4U 19" FM TYPE 48 Port SCS Angled Patch Panels with Telescopic Rails Fiber Optic	482x240x132 mm





1U-FR TYPE FIBER OPTIC PANELS WITH TELESCOPIC RAILS



Highlights

- 1U versions (12,24, port capacity)
- Smooth and convenient mechanical sliding system
- Manages small & large quantities of fiber with a high packing density
- Cable glands to secure the incoming fiber, allows min movement
- Fiber guide tubes to protect and direct the fibers to the cassettes in a professional way
- Easy to maintain and extend
- Minimum bend radius of fibers and strain relief for all entry cables
- Fiber bend radius control of 35 mm



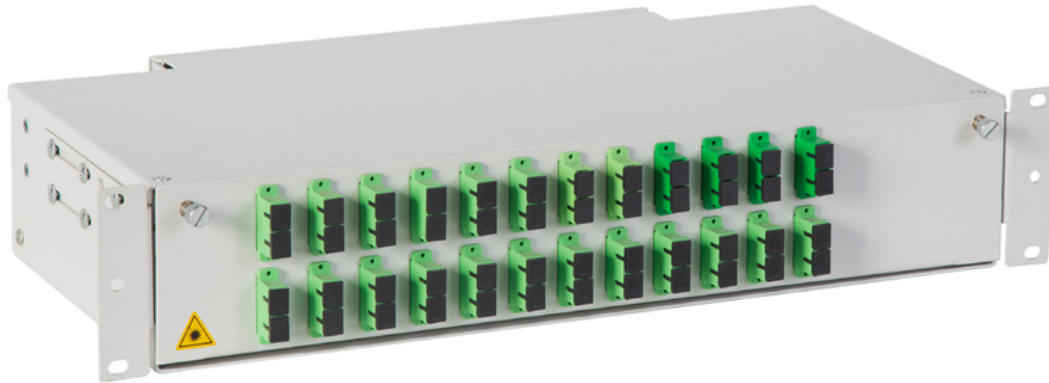
- All known connector types such as SC, FC, ST, E2000, LC, MU etc. are possible

1U 19" Patch Panels with Telescopic Rails

Product code	Product description	Dimensions (W*D*H)
MT.FM1U12SCD.C0	1U 19" FR TYPE 12 Port SCD Patch Panels with Telescopic Rails Fiber Optic	482x240x44 mm
MT.FM1U12SCS.C0	1U 19" FR TYPE 12 Port SCS Angled Patch Panels with Telescopic Rails Fiber Optic	482x240x44 mm
MT.FM1U24SCD.C0	1U 19" FR TYPE 24 Port SCD Patch Panels with Telescopic Rails Fiber Optic	482x240x44 mm
MT.FM1U24SCS.C0	1U 19" FR TYPE 24 Port SCS Patch Panels with Telescopic Rails Fiber Optic	482x240x44 mm



2U-FR TYPE FIBER OPTIC PANELS WITH TELESCOPIC RAILS



Our 2U 19" Fiber Optic Patch Panel with Telescopic Rails provides professional cable management and fiber termination with a smooth telescopic pull-out rail system.

Technical Details

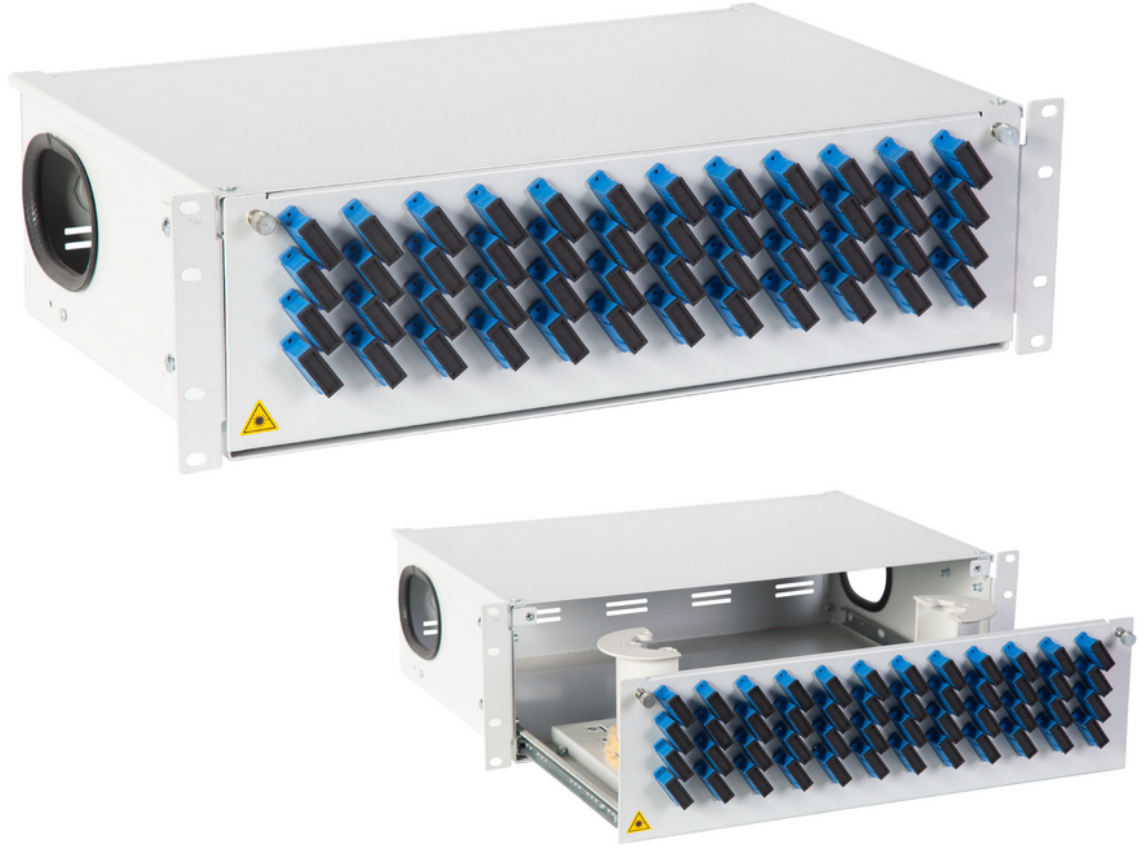
- ❖ Dimensions: (19") 482mm (W) x 240mm (D) x(H) 88mm
- ❖ Material: Mild Steel
- ❖ Color: Powder coat RAL7035 or RAL9005
- ❖ Maximum:Port Capacity 12-24-36-48 Ports
- ❖ Weight:5kg

2U 19" Patch Panels with Telescopic Rails

Product code	Product description	Dimensions (W*D*H)
MT.FM2U24SCD.C0	2U 19" FR TYPE 24 Port SCD Patch Panels with Telescopic Rails Fiber Optic	482x240x88 mm
MT.FM2U24SCS.C0	2U 19" FR TYPE 24 Port SCS Patch Panels with Telescopic Rails Fiber Optic	482x240x88 mm



3U-FR TYPE FIBER OPTIC PANELS WITH TELESCOPIC RAILS



Our 3U 19" Fiber Optic Patch Panel with Telescopic Rails provides professional cable management and fiber termination with a smooth telescopic pull-out rail system.

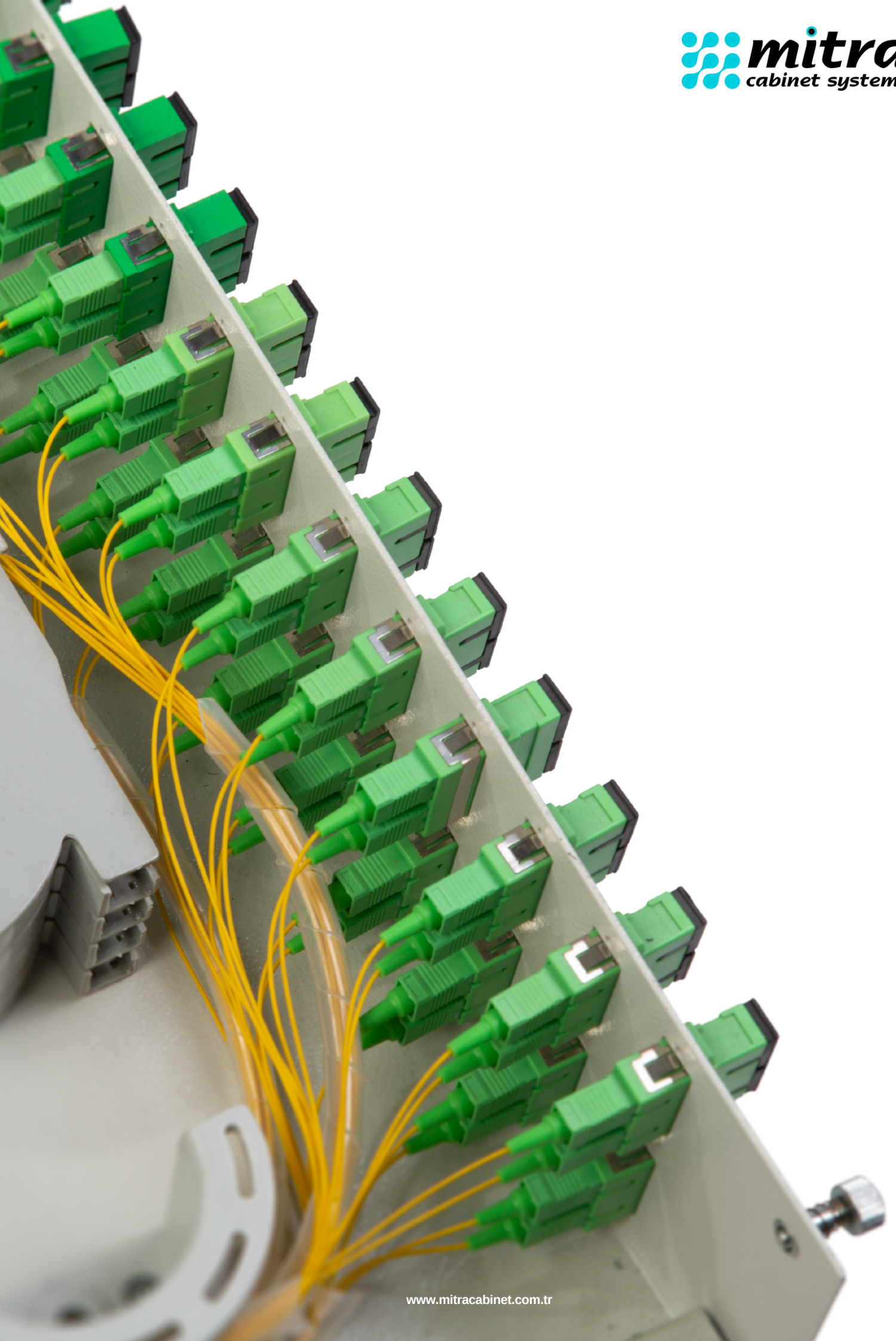
Technical Details

- ❖ Dimensions: (19") 482mm (W) x 280mm (D) x(H) 132mm
- ❖ Material: Mild Steel
- ❖ Color: Powder coat RAL7035 or RAL9005
- ❖ Maximum:Port Capacity 48-96 Ports
- ❖ Weight:10kg

3U 19" Patch Panels with Telescopic Rails

Product code	Product description	Dimensions (W*D*H)
MT.FR3U96SCD.C0	3U 19" FR TYPE 96 Port SCD Patch Panels with Telescopic Rails Fiber Optic	482x280x132 mm
MT.FM3U96SCS.C0	3U 19" FR TYPE 96 Port SCS Patch Panels with Telescopic Rails Fiber Optic	482x280x132 mm







1U TÜRKSAT TYPE FIBER OPTIC PATCH PANELS WITH FRONT CABLE GUIDE



TECHNICAL SPECIFICATIONS

- ❖ 12 Fiber splice and distribution capacity.
- ❖ 1U, 1.2 mm galvanized sheet metal body.
- ❖ Structure with telescopic rail and balcony.
- ❖ Magnetic cover system.
- ❖ Compliant with Bellcore GR-326 standards.
- ❖ Single row 24 fiber splice capacity in one cassette.
- ❖ Two-way, 4 rear cable entry slots.
- ❖ Up to 30 mm fiber bending radius controlled
- ❖ Capacity of 2 additional cassettes.
- ❖ Optional use of different types of adapters.
- ❖ Capacity compatible numbering and QR code label.
- ❖ Dimensions: (19") 482mm (W) x 340mm (D) x(H) 44.45mm
- ❖ Material: Mild Steel
- ❖ Color: Powder coat RAL7035 or RAL9005
- ❖ Maximum:Port Capacity 12-24-48 Ports
- ❖ Weight:2.8kg



1U 19" Türksat Patch Panels with Telescopic Rails

Product code	Product description	Dimensions (W*D*H)
MT.TSF1U12SCD.C0	1U 19" 12 port SCD Türksat Patch Panels with Telescopic Rails	482x340x44 mm
MT.TSF1U24SCD.C0	1U 19" 24 port SCD Türksat Patch Panels with Telescopic Rails	482x340x44 mm



2U TÜRKSAT TYPE FIBER OPTIC PATCH PANELS WITH FRONT CABLE GUIDE



TECHNICAL SPECIFICATIONS

- 72-96 Fiber splice and distribution capacity.
- 2U, 1.2 mm galvanized sheet metal body.
- Structure with telescopic rail and balcony.
- Magnetic cover system.
- Compliant with Bellcore GR-326 standards.
- Single row 24 fiber splice capacity in one cassette.
- Two-way, 4 rear cable entry slots.
- Up to 30 mm fiber bending radius controlled
- Capacity of 2 additional cassettes.
- Optional use of different types of adapters.
- Capacity compatible numbering and QR code label.
- Dimensions: (19") 482mm (W) x 340mm (D) x(H) 88mm
- Material: Mild Steel
- Color: Powder coat RAL7035 or RAL9005
- Maximum:Port Capacity 12-24-48-72-96 Ports
- Weight:3.7kg



2U 19" Türksat Patch Panels with Telescopic Rails

Product code	Product description	Dimensions (W*D*H)
MT.TSF2U72SCD.C0	1U 19" 72 port SCD Türksat Patch Panels with Telescopic Rails	482x340x88 mm
MT.TSF2U96SCD.C0	1U 19" 96 port SCD Türksat Patch Panels with Telescopic Rails	482x340x88 mm



3U TÜRK SAT TYPE FIBER OPTIC PATCH PANELS WITH FRONT CABLE GUIDE



TECHNICAL SPECIFICATIONS

- ❖ 144 Fiber splice and distribution capacity.
- ❖ 3U, 1.2 mm galvanized sheet metal body.
- ❖ Structure with telescopic rail and balcony.
- ❖ Magnetic cover system.
- ❖ Compliant with Bellcore GR-326 standards.
- ❖ Single row 24 fiber splice capacity in one cassette.
- ❖ Two-way, 4 rear cable entry slots.
- ❖ Up to 30 mm fiber bending radius controlled
- ❖ Capacity of 2 additional cassettes.
- ❖ Optional use of different types of adapters.
- ❖ Capacity compatible numbering and QR code label.
- ❖ Dimensions: (19") 482mm (W) x 340mm (D) x(H) 133mm
- ❖ Material: Mild Steel
- ❖ Color: Powder coat RAL7035 or RAL9005
- ❖ Maximum: Port Capacity 12-24-48-72-96-144 Ports
- ❖ Weight: 4.2kg



3U 19" Türksat Patch Panels with Telescopic Rails

Product code	Product description	Dimensions (W*D*H)
MT.TSF3U144SCD.C0	3U 19" 144 port SCD Türksat Patch Panels with Telescopic Rails	482x340x133 mm





1U SWING TYPE FIBER OPTIC PATCH PANELS



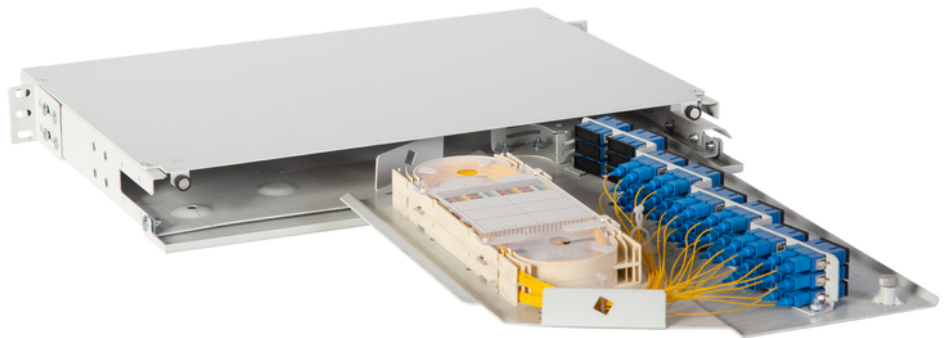
SWINGSYSTEM

- ❑ 1U Fiber Termination Patch/Splice Panel
- ❑ Mitra offers an innovative, high density swing panel has been designed to accept up to 48
- ❑ fibres housed within a 1RU space. The tray fully manages the incoming fibres, pigtails and
- ❑ splices. The panel can swing by up to 120° to allow easy access during installation or rework
- ❑ with no disturbance of the existing cable or fibres. Angled adaptors route exiting patch cords
- ❑ directly into the cabinet side management. The panel can be assembled to swing in either
- ❑ direction, facilitating cable entry from either side



DIMENSIONS

DEPTH: 280mm
 WIDTH: 430mm
 HEIGHT: 44mm
 RACK UNITS: 1
 CAPACITY: 24-36-48
 UNLOADED
 WEIGHT: 4.2kg



1U 19" Swing Patch Panels

Product code	Product description	Dimensions (W*D*H)
MT.FSW1U48SCD.C0	1U 19" 48 port SCD Swing Patch Panels	482x340x44 mm



2U SWING TYPE FIBER OPTIC PATCH PANELS



SWING SYSTEM

- ❖ 2U Fiber Termination Patch/Splice Panel
- ❖ Mitra offers an innovative, high density swing panel has been designed to accept up to 96
- ❖ fibres housed within a 1RU space. The tray fully manages the incoming fibres, pigtailed and
- ❖ splices. The panel can swing by up to 120° to allow easy access during installation or rework
- ❖ with no disturbance of the existing cable or fibres. Angled adaptors route exiting patch cords
- ❖ directly into the cabinet side management. The panel can be assembled to swing in either
- ❖ direction, facilitating cable entry from either side



DIMENSIONS

DEPTH: 280mm

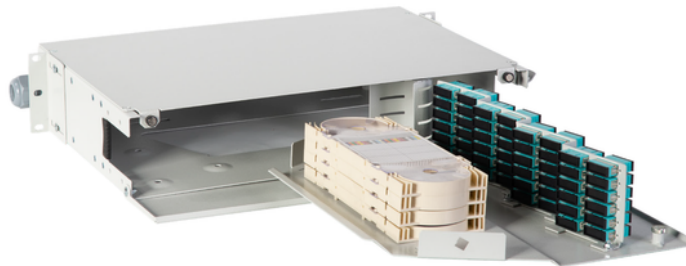
WIDTH: 430mm

HEIGHT: 88mm

RACK UNITS: 2

CAPACITY: 48-72-96

UNLOADED
WEIGHT: 5kg



2U 19" Swing Patch Panels

Product code	Product description	Dimensions (W*D*H)
MT.FSW2U96SCD.C0	2U 19" 96 port SCD Swing Patch Panels	482x340x88 mm



3U SWING TYPE FIBER OPTIC PATCH PANELS



SWING SYSTEM

- ❖ 3U Fiber Termination Patch/Splice Panel
- ❖ Mitra offers an innovative, high density swing panel has been designed to accept up to 144
- ❖ fibres housed within a 1RU space. The tray fully manages the incoming fibres, pigtailed and
- ❖ splices. The panel can swing by up to 120° to allow easy access during installation or rework
- ❖ with no disturbance of the existing cable or fibres. Angled adaptors route exiting patch cords
- ❖ directly into the cabinet side management. The panel can be assembled to swing in either
- ❖ direction, facilitating cable entry from either side



DIMENSIONS

DEPTH: 280mm

WIDTH: 430mm

HEIGHT: 133mm

RACK UNITS: 3

CAPACITY: 72-144

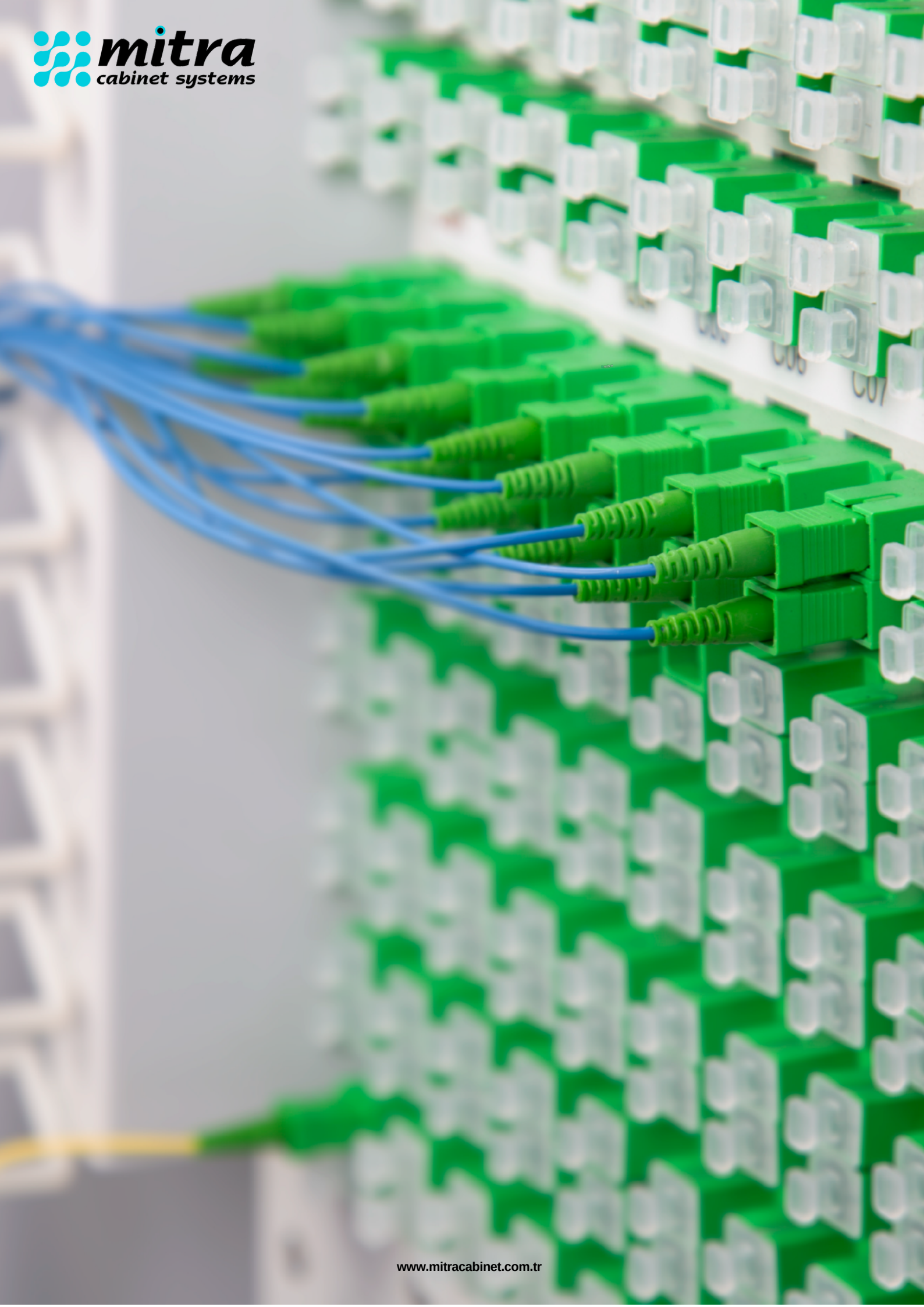
UNLOADED
WEIGHT: 6.2kg



2U 19" Swing Patch Panels

Product code	Product description	Dimensions (W*D*H)
MT.FSW3U144SCD.C0	3U 19" 144 port SCD Swing Patch Panels	482x340x133 mm





WALL MOUNTED FIBER OPTICAL BOXES



- Wall Mount Fiber Termination Patch/Splice Box
- is designed for use as a
- wall mount interconnect point where termination
- and connectivity of up to 48 fibers is desired
- This solution allows easy access to patch cords
- and pigtails after opening the hinged front door
- Standard boxes are available empty for complete
- field configuration, half-loaded with adaptor
- plates for field termination and cable assembly
- installation, or stubbed with a factory-installed
- cable assembly of a user specified length.



DIMENSIONS

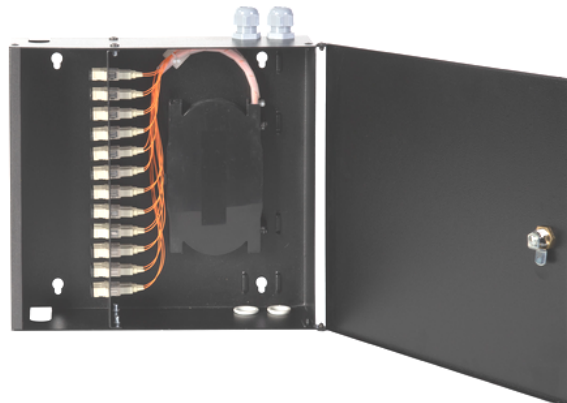
DEPTH: 85mm

WIDTH: 290mm

HEIGHT: 320mm

CAPACITY: 24-48

UNLOADED
WEIGHT: 2.8kg



FWS WALL TYPE SINGLE DOOR FIBER OPTIC

Product code	Product description	Dimensions (W*D*H)
MT.FWS12SCS.C0	12 Port SCS, Wall Mounted Single Door Fiber Optic Box	290x320x85 mm
MT.FWS12SCD.C0	12 Port SCD, Wall Mounted Single Door Fiber Optic Box	290x320x85 mm
MT.FWS12STS.C0	12 Port STS, Wall Mounted Single Door Fiber Optic Box	290x320x85 mm
MT.FWS24SCS.C0	24 Port SCS, Wall Mounted Single Door Fiber Optic Box	290x320x85 mm
MT.FWS24SCD.C0	24 Port SCD, Wall Mounted Single Door Fiber Optic Box	290x320x85 mm
MT.FWS24STS.C0	24 Port STS, Wall Mounted Single Door Fiber Optic Box	290x320x85 mm

DOUBLE COVER WALL TYPE FIBER OPTIC

Wall Mount Fiber Termination Patch/Splice Box

Large Fiber Termination Patch/Splice Box is designed for use as a wall mount interconnect point where termination and connectivity of up to 96 fibers is desired. This solution allows easy access to patch cords and pigtails after opening the hinged front doors. Standart boxes are available empty for complete field configuration, half-loaded with adaptor plates for field termination and cable assembly installation, or stubbed with a factory-installed cable assembly of a user specified length.



DIMENSIONS

DEPTH: 100mm
 WIDTH: 330mm
 HEIGHT: 430mm
 CAPACITY: 48-96
 UNLOADED
 WEIGHT: 5.5kg



a place of practice

FWD DUVAR TİPİ ÇİFT KAPAKLI FİBER OPTİK

Product code	Product description	Dimensions (W*D*H)
MT.FWD96SCS.C0	96 Port SCS, Wall Mounted Double Cover Fiber Optic Box	330x430x100
MT.FWD48SCD.C0	48 Port SCD, Wall Mounted Double Cover Fiber Optic Box	330x430x100
MT.FWD96STS.C0	96 Port STS, Wall Mounted Double Cover Fiber Optic Box	330x430x100

WALL MOUNTED MIDI FIBER OPTICAL BOXES



- ❖ Wall Mount Midi Fiber Termination Patch/Splice Box
- ❖ is designed for use as a
- ❖ wall mount interconnect point where termination
- ❖ and connectivity of up to 24 fibers is desired
- ❖ This solution allows easy access to patch cords
- ❖ and pigtails after opening the hinged front door
- ❖ Standard boxes are available empty for complete
- ❖ field configuration, half-loaded with adaptor
- ❖ plates for field termination and cable assembly
- ❖ installation, or stubbed with a factory-installed
- ❖ cable assembly of a user specified length.

DIMENSIONS

DEPTH: 55mm

WIDTH: 300mm

HEIGHT: 300mm

CAPACITY: 12-24

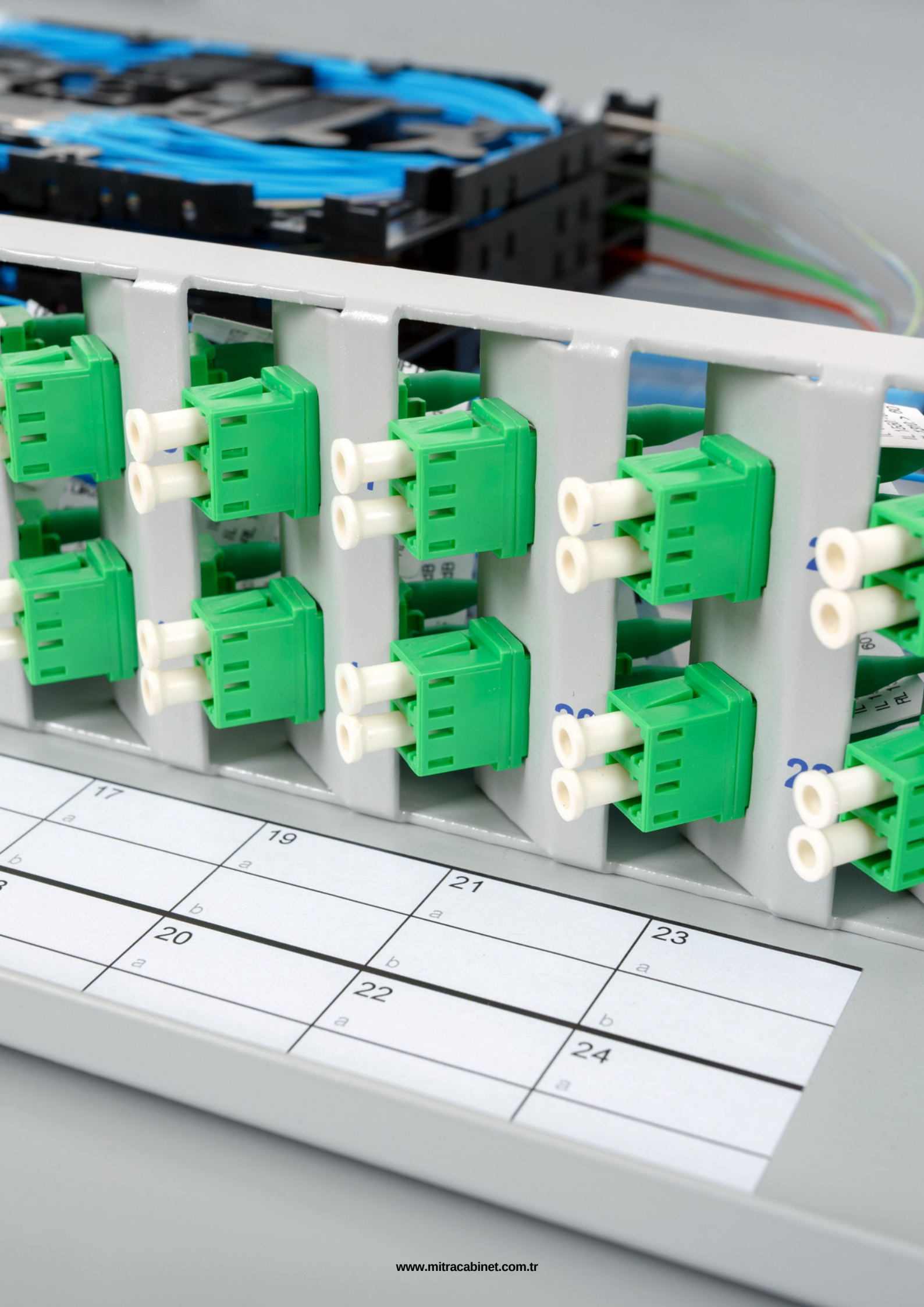
UNLOADED

WEIGHT: 2.2kg



FWM WALL TYPE MIDI FIBER OPTIC BOX

Product code	Product description	Dimensions (W*D*H)
MT.FWM12SCS.C0	12 Port SCS, Wall Mounted Midi Fiber Optic Box	300x300x55 mm
MT.FWM12SCD.C0	12 Port SCD, Wall Mounted Midi Fiber Optic Box	300x300x55 mm
MT.FWM12STS.C0	12 Port STS, Wall Mounted Midi Fiber Optic Box	300x300x55 mm



	17				
	a				
		19			
		a			
			21		
			a		
		20		23	
		a		a	
			22		
			a		
				24	
				a	

OPTIBOX SMALL WALL MOUNT FIBER OPTIC

- ❖ Wall Mount Fiber Termination Patch/Splice Box
- ❖ Patch/Splice Box is designed for use as a wall mount interconnect point where termination and connectivity of up to 24 fibers is desired. This solution allows easy access to patch cords and pigtailed after opening the hinged cassette tray.
- ❖ Standard boxes are available empty for complete field configuration, half-loaded with adaptor plates for field termination and cable assembly installation, or stubbed with a factory-installed cable assembly of a user specified length



DIMENSIONS

DEPTH: 50mm
 WIDTH: 205mm
 HEIGHT: 145mm
 CAPACITY: 6-12
 UNLOADED
 WEIGHT: 1kg



Optibox Small Wall Mount

Product code	Product description	Dimensions (W*D*H)
MT.OPTiBOX6SCD.C2	Optibox Small Wall Mount 6 port SC Duplex Fiber Optic	205X145X50 mm
MT.OPTiBOX6SCD.ALM.C2	Optibox Small Wall Mount 6 port SC Duplex Fiber Optic ALM	205X145X50 mm

IP65 WALL MOUNT FIBER OPTIC

IP65-Wall mounted fiber optic termination panel is a user-friendly termination box designed for Wall and pole mounting applications, both indoors and outdoors, resistant to harsh weather conditions. The panel is designed for the use of add-on, patch and passive fiber optic components.

IP65-Wall type fiber optic termination panel meets all your expectations with extremely specially designed interior equipment.



DIMENSIONS

DEPTH: 100mm

WIDTH: 400mm

HEIGHT:400mm

CAPACITY:12-24-48

UNLOADED
WEIGHT:6.5kg



IP65 WALL-BOX WALL MOUNT FIBER OPTIC

Product code	Product description	Dimensions (W*D*H)
MT.IP65404010.24SCD.CO	400x400x100mm24 port SCD,IP65 Wall Mounted Fiber Optic	400X400X100 mm
MT.IP65404010.24SCS.CO	400x400x100mm24 port SCD,IP65 Wall Mounted Fiber Optic	400X400X100 mm

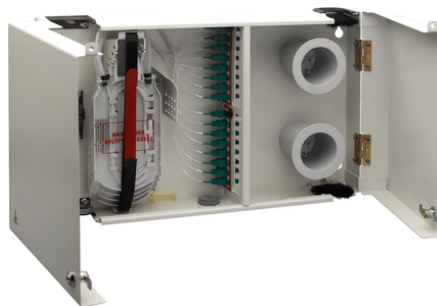
BASK DOUBLE COVER WALL TYPE FIBER OPTIC



Wall mounted BASK termination boxes are designed to terminate fiber and optical splitters in FTTH applications, to distribute fibers to apartments / buildings / houses. BASK boxes can be used with dividers in different partition ratios and can serve with 16, 32 or 48 distribution port capacities.



Quick and easy field installation
 High quality optical products (Splitter, U-link and Connectors)
 UL 94-V0 class plastic materials
 Available with 4,8,16 and 32 PLC Splitter options
 Sheet material and epoxy polyester powder coating
 Standard color is RAL 7035. Other colors are available upon request.
 Customer logo can be screen printed on request.



BASK DOUBLE COVER WALL TYPE FIBER OPTIC

Product code	Product description	Dimensions (W*D*H)
MT.BSK-16.KT.C2	16 PORT DOUBLE COVER WALL MOUNT BSK FIBER OPTICAL BOX WHITE (LEFT CASE-RIGHT DRUM)	540X70X300
MT.BSK-32.KT.C2	32 PORT DOUBLE COVER WALL MOUNT BSK FIBER OPTICAL BOX WHITE (LEFT CASE-RIGHT DRUM)	540X97X300
MT.BSK-48.KT.C2	48 PORT DOUBLE COVER WALL MOUNT BSK FIBER OPTICAL BOX WHITE (LEFT CASE-RIGHT DRUM)	540X124X300

F-CENTER FIBER CABINET



F-CENTER: Fiber Optic Distribution Features

The Fiber Optic Distribution Frame conforms to standard 19 and ETSI installations.

Fiber ODF is designed to be used with High density side access type modules.

2016 port maximum fiber capacity (splice & patch) and superior cable management

F-CENTER Optical distribution roof has special cable glands to fix the maximum number of cable bundles.

Special miniflex tubes for feeding modules

F-CENTER Optical distribution frame provides maximum protection against crushing and straining for fiber cables.

Wide variety of splice, patch and cable storage options

Critical bending radius protection of 35mm across all roof and fiber modules

Maximum cable protection Interchangeable additional cassettes for various cable counts and adapter types

F-CENTER: WDM and splitter can be attached to the optical distribution frame. Integrated patchcord management and storage

Capacity Information:

14 x 3U Modules on 47 U roof

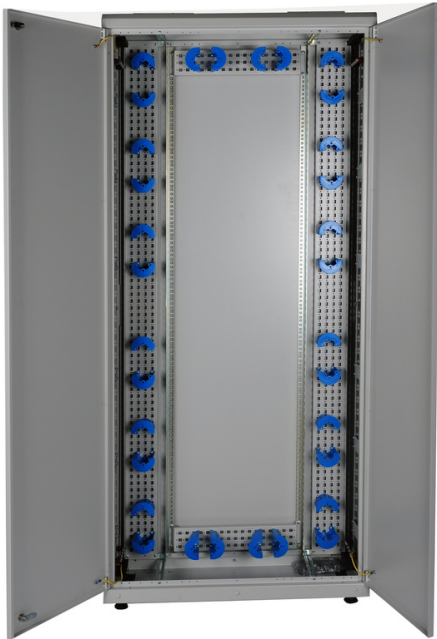
LC, SC, FC, ST, MTRJ, E-2000 adapter types

The ODF optical distribution frame complies with Telcordia Specification GR-449.

F-CENTER: Indoor Fiber Distribution Cabinets have an extremely robust and strong structure that allows them to be used in all applications. ODF offers cost-effective and assembly-friendly solutions for a multitude of applications in the fiber field. It is configurable to end-user requirements and offers unique features to benefit system designers, installers and network administrators. The fully assembled standard cabinet can be delivered with or without a side cover. The F-CENTER optical distribution frame offers the highest possible capacity and superior cabling with flexible cabling access, an expandable roof concept, integrated cable management and future-proof modular expansion. The high density side access type module is also designed to suit various types of fiber termination, splice, patching and storage applications.

F-CENTER Application Areas

Fiber transmission networks, Telecom backbone infrastructure, FTTX and GPON applications, High-capacity data centers, fiber infrastructures of government institutions



Product code	Product description	Dimensions (W*D*H)	Kg
MT.ODF12U90.C0	12U Dikili Tip ODF Kabinet W=900mm D=300mm	900x628x300 mm	34 kg
MT.ODF26U90.C0	26U Dikili Tip ODF Kabinet W=900mm D=300mm	900x1250x300 mm	58 kg
MT.ODF36U90.C0	36U Dikili Tip ODF Kabinet W=900mm D=300mm	900x1700x300 mm	78 kg
MT.ODF47U90.C0	47U Dikili Tip ODF Kabinet W=900mm D=300mm	900x2200x300 mm	100 kg

C0 = Color Code, C02 refers to Light Gray RAL 7035 and C01 to Black RAL 9005, please add it when ordering.

Optical Fiber Assemblies



SC/UPC Duplex Multimode OM3 Fiber Optic Adapter



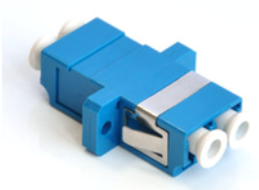
9/125(OS1-OS2) Simplex & Duplex Patch Cords



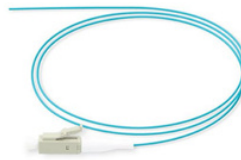
LC/UPC SM Quad Fiber Optical Adapters



62.5/125(OM1) Simplex & Duplex Patch Cords



LC - LC Duplex Fiber Optic Adapters



62.5/125(OM1) Pigtailed



Fiber Optic Adapter SC/APC Simplex



fiber optic cable solutions



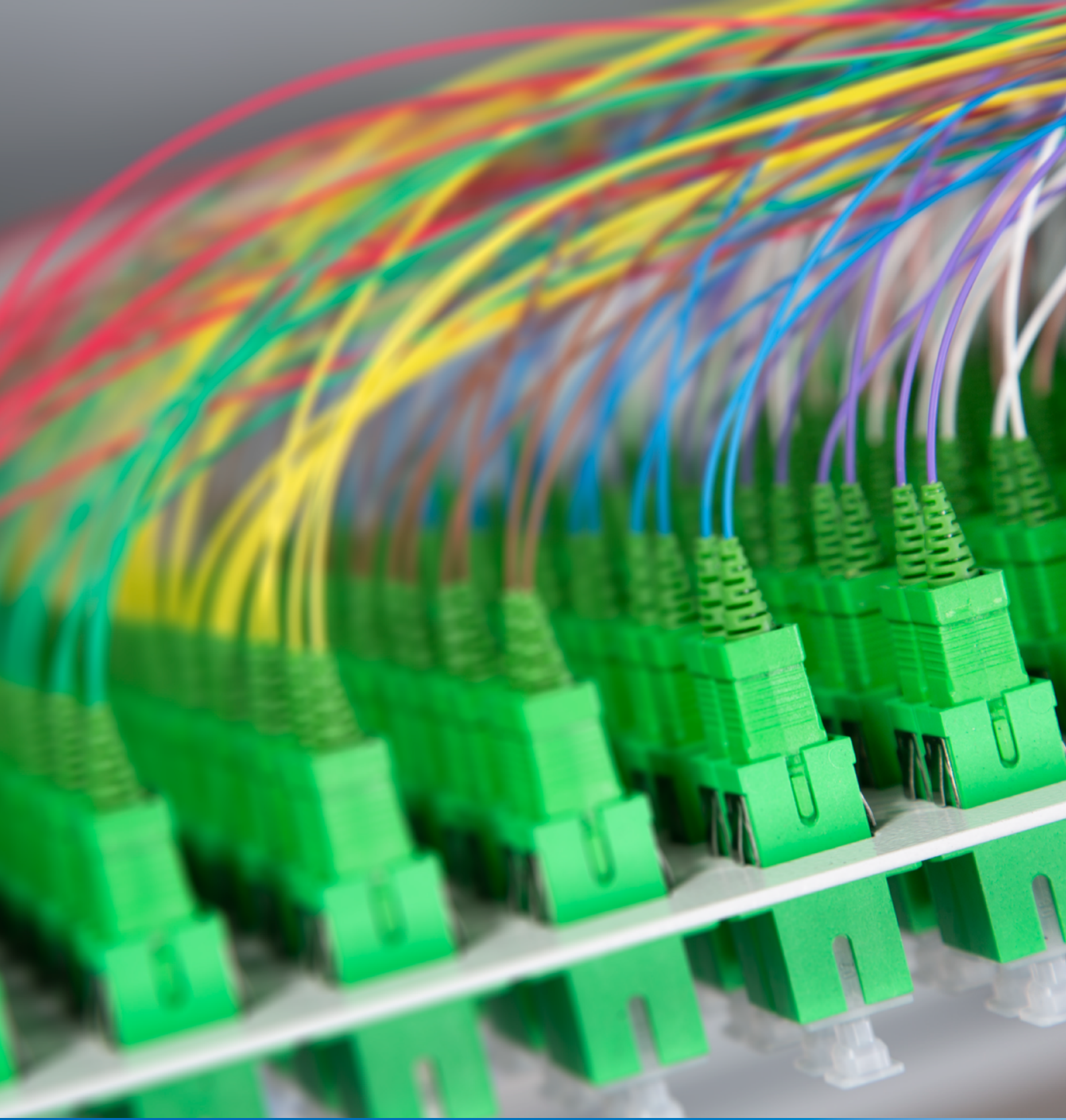
Fiber Optic Adapter OM3 LC PC Duplex



Protection sleeve



fiber splice cassette



Fabrika: Organize Sanayi Bölgesi 26
Caddesi No:5
Odunpazarı/ESKİŞEHİR/TÜRKİYE